

# The Birchham

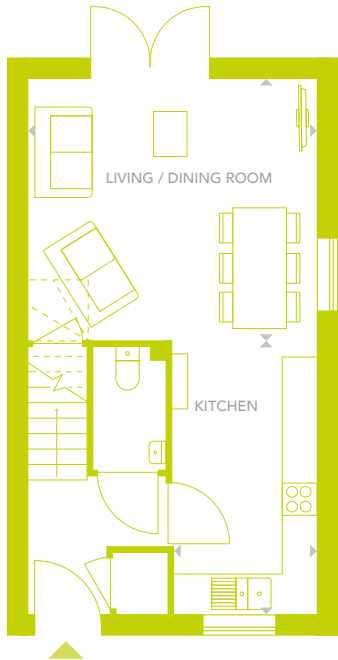
Four bed house



**ROBOROUGH  
ECO HOMES**

**PLOTS: 30-32 & 71-73\***

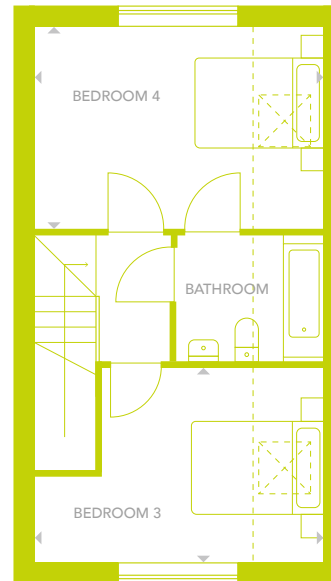
\*Plots 71-73 handed



**GROUND FLOOR**



**FIRST FLOOR**



**SECOND FLOOR**

Total floor area: **102m<sup>2</sup> | 1100ft<sup>2</sup>**

Dimensions	m	ft
Living/Dining	4.35 x 3.94	14'3" x 13'7"
Kitchen	4.05 x 2.20	12'8" x 7'2"
Master Bedroom	4.35 x 2.95	14'3" x 9'8"
Bedroom 2	2.95 x 2.20	9'8" x 7'2"
Bedroom 3	4.35 x 2.95	14'3" x 9'8"
Bedroom 4	4.35 x 2.95	14'3" x 9'8"

A development by



Part of Places for People

[zeroc.co.uk/roborough](https://zeroc.co.uk/roborough) [roborough@zeroc.co.uk](mailto:roborough@zeroc.co.uk)

Please note: All layouts, kitchens, floor plans, configurations, maps and information are intended for guidance only and accuracy of this information cannot be relied upon by prospective purchasers who must make their own enquiries to satisfy themselves by inspection or otherwise as to the correct detail.