

# CONINGSBY PLACE

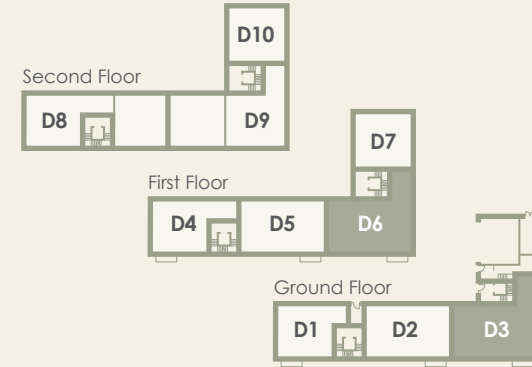
Poundbury



*D3 and D6 – Three bedroom apartments*



zeroc



#### APARTMENTS D3 & D6

	Metres	Feet
Kitchen	3.15 x 4.27m	10'4" x 14'0"
Living/Dining	5.05 x 8.17m	16'7" x 26'10"
Store	1.16 x 0.76m	3'10" x 2'6"
Bedroom 1	3.72 x 3.51m	12'2" x 11'6"
En-Suite	3.72 x 1.31m	12'2" x 4'4"
Bedroom 2	3.72 x 3.08m	12'2" x 10'1"
Bedroom 3	3.40 x 3.08m	11'2" x 10'1"
Bathroom	2.56 x 2.86m	8'5" x 9'5"
<b>Floor area</b>	<b>116m<sup>2</sup></b>	<b>1257ft<sup>2</sup></b>

01305 251 277

salesenquiries@zeroc.co.uk | www.zeroc.co.uk

Please note: All layouts and floor plans, configurations, maps and information are intended for guidance only and accuracy of this information cannot be relied upon by prospective purchasers who must make their own enquiries to satisfy themselves by inspection or otherwise as to the correct detail.