

# CONINGSBY PLACE

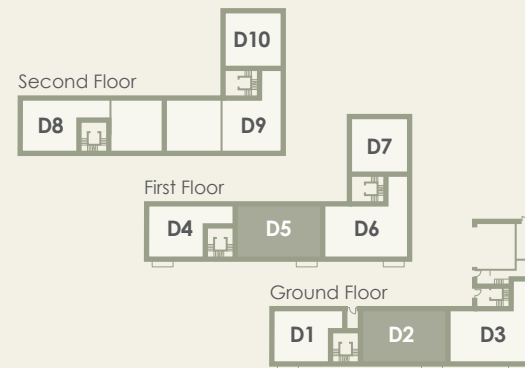
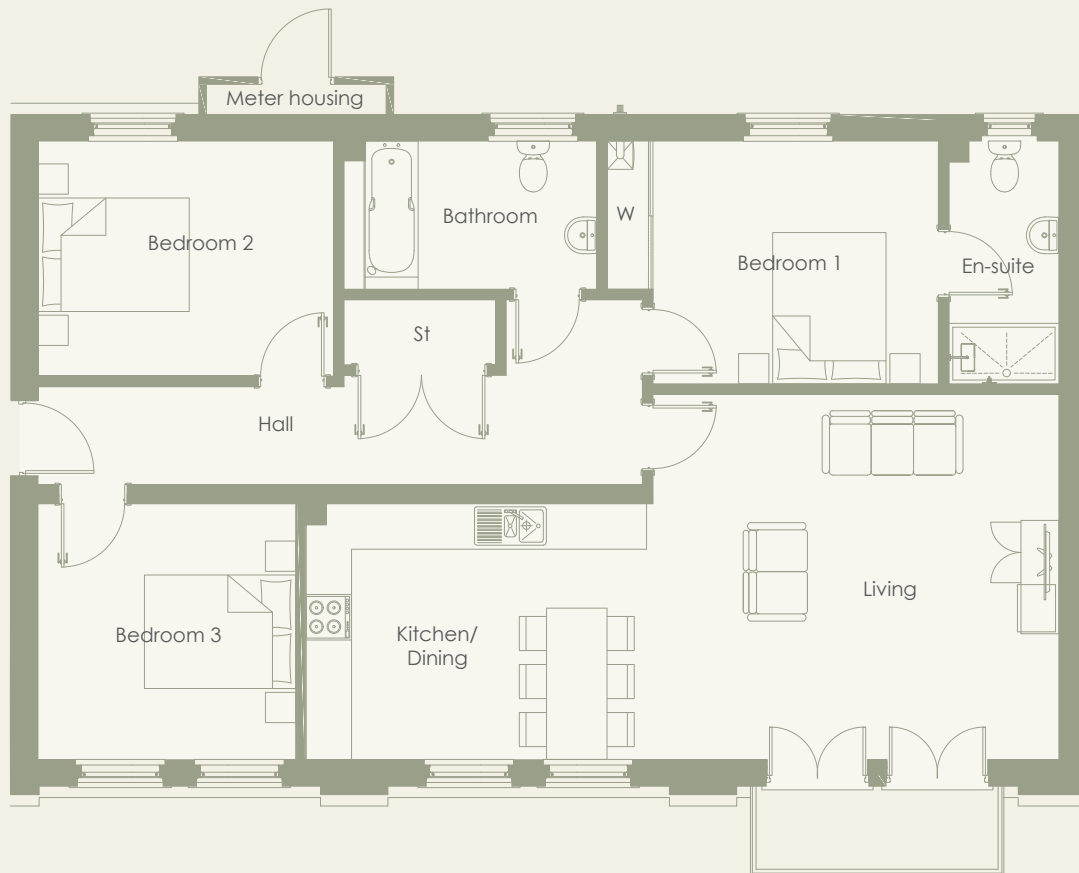
Poundbury



*D2 and D5 – Three bedroom apartments*



zeroc



#### APARTMENTS D2 & D5

	Metres	Feet
Kitchen/Dining	4.58 x 3.38m	15'0" x 11'1"
Living	5.36 x 4.83m	17'7" x 15'10"
Store	2.00 x 0.86m	6'7" x 2'10"
Bedroom 1	4.37 x 3.21m	14'4" x 10'6"
En-Suite	1.45 x 3.21m	4'9" x 10'6"
Bedroom 2	3.90 x 3.11m	12'10" x 10'2"
Bedroom 3	3.66 x 3.38m	12'0" x 11'1"
Bathroom	3.35 x 1.96m	10'11" x 6'5"
<b>Floor area</b>	<b>104m<sup>2</sup></b>	<b>1127ft<sup>2</sup></b>

01305 251 277

salesenquiries@zeroc.co.uk | www.zeroc.co.uk

Please note: All layouts and floor plans, configurations, maps and information are intended for guidance only and accuracy of this information cannot be relied upon by prospective purchasers who must make their own enquiries to satisfy themselves by inspection or otherwise as to the correct detail.