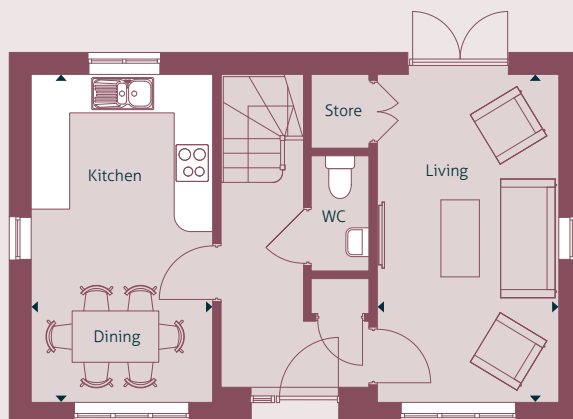


The Whitebeam (A)

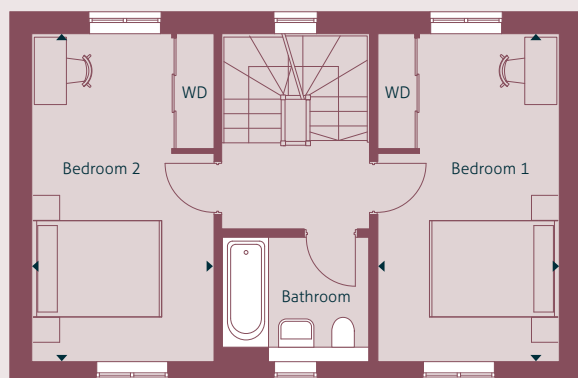
Four bedroom detached house



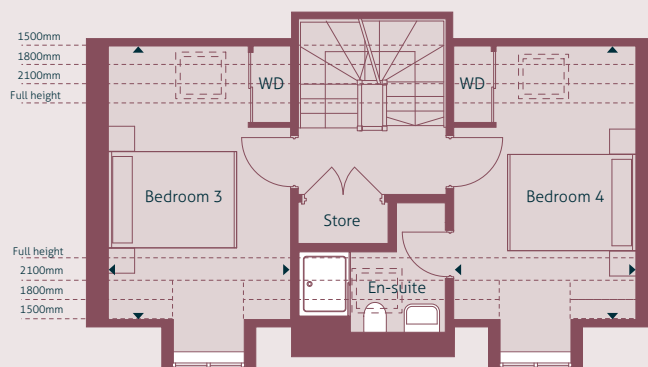
PLOT 46



GROUND FLOOR



FIRST FLOOR



SECOND FLOOR

Dimensions	m	ft
Living	5.19m x 2.89m	17' 0" x 9' 5"
Kitchen / Dining	5.19m x 2.89m	17' 0" x 9' 5"
Bedroom 1:	5.19m x 2.89m	17' 0" x 9' 5"
Bedroom 2:	5.19m x 2.89m	17' 0" x 9' 5"
Bedroom 3:	4.29m x 2.89m	14' 0" x 9' 5"
Bedroom 4:	4.29m x 2.89m	14' 0" x 9' 5"

Internal area: 120sq.m / 1289sq.ft

T: 01420 550 272
 E: woolmercopse@zeroc.co.uk
 www.zeroc.co.uk/woolmercopse



Please note: All layouts and floor plans, configurations, maps and information are intended for guidance only and accuracy of this information cannot be relied upon by prospective purchasers who must make their own enquiries to satisfy themselves by inspection or otherwise as to the correct detail.